

# – Gedcom –

## Service Programs

### *User Guide*

#### *Part 6*

- Gedcom Start Center – in Part 1
- Gedcom Conversion – in Part 2
- Gedcom Reduction – in Part 3
- Gedcom Sorting – in Part 7
- Gedcom Structure Analysis – in Part 7
- Gedcom Validate – in Part 4
- Gedcom Duplicates / Merge / Sync – in Part 5
- Gedcom Renumbering – in Part 7
- **Gedcom Listing**
- GSP – Gedcom Profile – in Part 1

Diedrich Hesmer  
Haldenstr 24  
D-71083 Herrenberg  
[ofb.hesmer@gmx.de](mailto:ofb.hesmer@gmx.de)

All changes to the previous version are colored

## Table of Contents

1	Introduction.....	3
2	Gedcom Listing.....	4
2.1	Description.....	4
2.2	Files.....	4
2.2.1	List Definition file (glsd-file).....	4
2.2.2	Gedcom Profile file (gxpd-file).....	4
2.2.3	Protocol- / Log file.....	4
2.2.4	Person list / txt-file.....	4
2.3	Data of the ged-file.....	4
2.4	Checking the DATE fields.....	5
3	Main screen.....	6
3.1	Tab "Selection Definitions".....	7
3.1.1	Tab "Person- & Data groups".....	7
3.1.2	Tab "Select places".....	9
3.1.3	Tab "Add Selection".....	10
3.1.4	Tab "Special Selection".....	12
3.1.5	Tab "Options".....	13
3.2	Tab "Lists".....	14
3.2.1	Tab "Output data fields".....	14
3.2.2	Tab "Output definition".....	17
3.2.3	Tab "Output options".....	18
4	Person Selection Screen.....	20

# 1 Introduction

This document is the part 6 of the User-Guide of the „Gedcom Service Programs“. Described is the program

- Gedcom Listing  
is used to create working lists from a ged-file. Various selection methods are available. For several persons their ancestors and/or descendants may be selected. Further options allow to control the volume of the new file. Partners, children, relations and media may be included at the transfer. Beside the standard data fields optional additional tags and events may be defined for output.

The details for

- Introduction
- Copyrights and License Conditions
- Support, Download & Installation
- Start of Program
- Gedcom Definitions
- Files used
  - Gedcom file (ged-file)
  - Language files
  - Protocol- / Log file
  - Folders for storing files

are described in part 1 of the document.

## 2 Gedcom Listing

### 2.1 Description

This program allows by selective extracting from any Gedcom file to build lists with the desired group of persons. For this a selection of persons, places and additional parameters are available. For several persons the ancestors and/or descendants may be selected. Further options allow to control the volume of the new file. Partners, children, parents, relations and media may be included at the transfer.

If no selection criteria is defined, a confirmation prompt pops up, allowing the listing of all persons.,

For considering program specific specialties of the genealogy programs, a gxpdp profile file is required, created by the program "GSP – Gedcom Profile". The entered selection criteria will be stored in glsd-files accordingly for later re-use.

The lists contain line by line the data of the related persons. Are family data defined for output, these will be placed to the related persons (male and female). Up to 10 columns (data fields) can be defined. The lists will be created as html-files and optional as csv-files.

When processing **gdz files**, the contained ged file is extracted and processed accordingly.

General information about gdz files and their loading can be found in the User Guide Part 1 in Chapter 5 "Files".

### 2.2 Files

#### 2.2.1 List Definition file (glsd-file)

This file stores the options and definitions specified at the main screen and the tabs **Selection Definitions** and **Lists** including the name of the Profile file and the name of the ged-file. They will be created by this program and should be stored using an expressive name. It is recommended to store all glsd-files in a common folder (e.g.. "C:\Data\Gedcom\files\"). The glsd-file is always UTF-8 coded.

#### 2.2.2 Gedcom Profile file (gxpd-file)

These files are storing all definitions for the genealogy program specific specialties for the respective data fields. They are created by the program "GSP – Gedcom Profile". The example files at the download area of the homepage may be used and modified according the personal needs. The gxpd-file is always UTF-8 coded.

**Note:** Normally due to the different definitions within the ged-file, for each genealogy program a separate gxpd-file is required.

#### 2.2.3 Protocol- / Log file

If expected media files are not found or year numbers can not be extracted from the date values, also a message will be noted here. The name of the log file will be composed from the name of the ged-file with an attached "\_lst.log", e.g. "my.ged" results in "my\_lst.log". The log-file is UTF-8 coded and stored in the folder of the ged-file. For details see the User Guide part 1 at section "Introduction".

#### 2.2.4 Person list / txt-file

Optional a list of persons, enclosed in the reduced ged-file, can be created as txt-file. Each person is shown in the format "Surname, Given name ( fromYYYY – toYYYY )" and is sorted according the proband selection list. The name of the txt file will be composed from the name of the ged-file with an attached "\_lst.txt", e.g. "my.ged" results in "my\_lst.txt". The txt-file is UTF-8 coded and stored in the folder of the ged-file.

### 2.3 Data of the ged-file

Following data can be processed:

- INDI records (persons) – completely
- FAM records (families) – completely

- NOTE records (notes), if existing – the content will be taken completely – only for selection, not for listing.
- SOUR records (sources), if existing – only the data of the TITL tags will be taken – only for selection, not for listing.
- REPO records (repositories) – skipped
- OBJE records (media) – skipped
- \_LOC records (locations) – skipped

## **2.4 Checking the DATE fields**

Will follow the description of User Guide "GSP – part 1", whereas the conversion of incomplete year values in numerical values (190x → 1905) can be done optional.

As option also incomplete day and month values can be converted to numerical values.

See also GSP User Guide 1 Chapter "Checking of DATE values" and at appendix "Date Formats".

### 3 Main screen

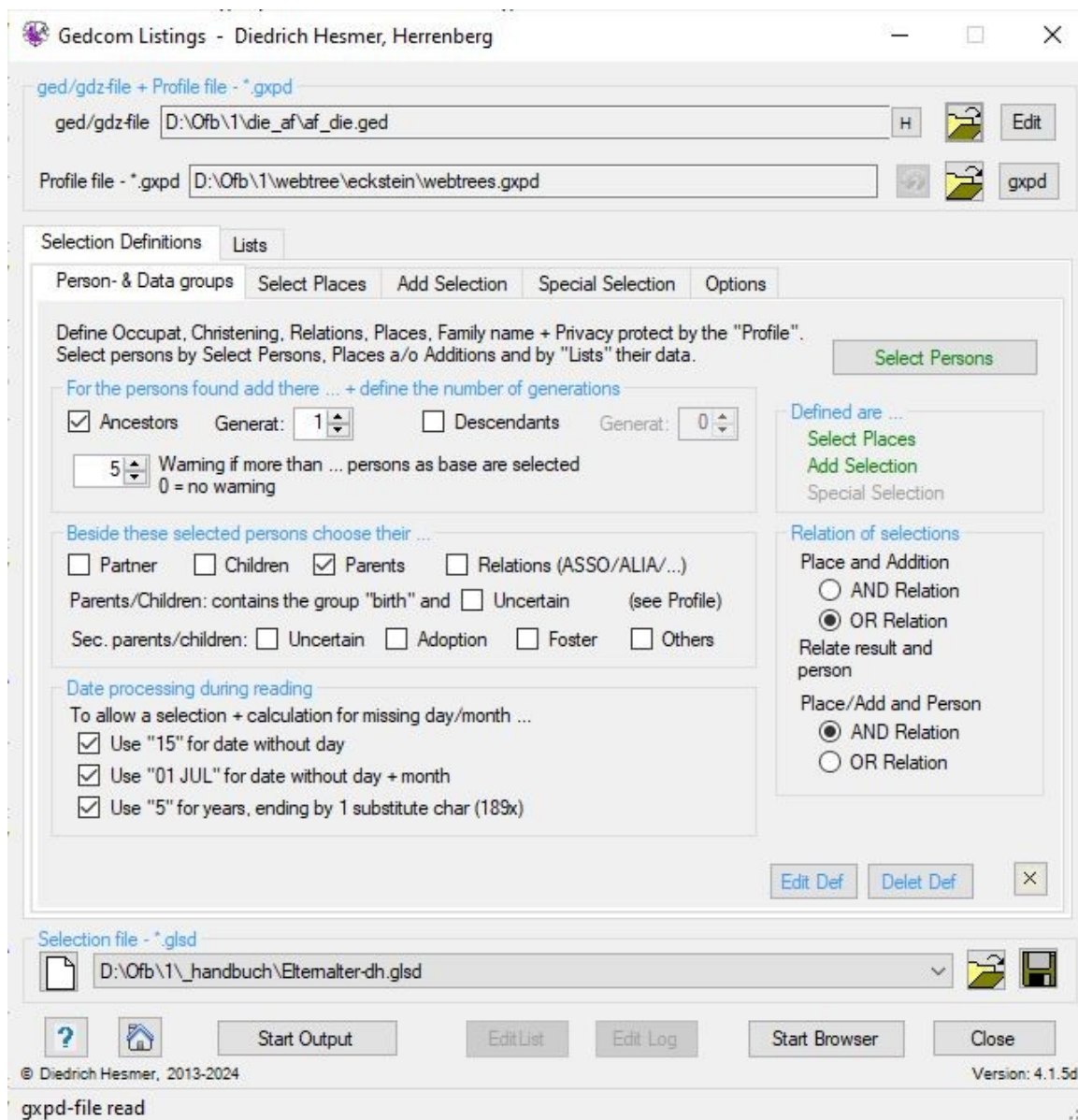



Fig 1: Main screen "Gedcom Listing"




After start of the program the main screen shows up. The name of the last loaded glsd- file, if found in an ini-file, will be reloaded. If the name of the gxp-file is stored in the glsd-file, also those data will be loaded automatically.

This screen has 2 base tabs with sub tabs and allows the viewing and modification of the options and definitions:

- 5 tabs as **Selection Definitions** for selection of persons, places and additional selections and for further options.
- Various tabs for definition of **Lists**.

At the top of the screen the ged- and gxp-files will be defined, below of the tabs the glsd-file. Following buttons will support you:

- By the respective  a Gedcom-file, a glsd-selection-file resp. a gxp-profile-file will be loaded.
- Pushing **"Edit"** by the left mouse button opens the ged-file by the text editor for viewing, defined by the "Base-Settings" of the OFB resp. Gedcom Start Center. Alternatively the standard text editor will be used. Pushing the right mouse button starts "GedShow" with the ged-file.

- With the optional "**H**" button to the right of the loaded ged file the HEAD record of the ged file is displayed in the browser.
- By **gxpd** the program "GSP Gedcom Profile Management" will be started with the gxpd-file shown left. Here you can view and modify the settings.
- By  the stored gxpd-file can be reloaded after modification..
- By  a folder (e.g. "C:\Data\Gedcom\files\") and name for the selection definition file will be defined and the file stored as "glsd-file".
- By  the respective data will be set to their initial value.
- A click on the "DropDown" Element for the glsd-selection file opens a list with the recent used glsd files. up to the number defined at "Settings" in the Start-Center. Selecting one of these files will load this file.
- Pushing **?** opens the user guide.
- Pushing the **house** opens the GSP homepage by the browser.
- By **Start Output** the process for selection and output starts. A checking is starting to assure that everything needed is available.  
If **no** selection is defined, a confirmation prompt pops up, allowing the selection of **all** persons for output. After successful checking the sequence of the process will be: read ged-file → info about the content of the ged-file → place, additional, person selection → add persons with relations → add partners/children/parents → message about persons found → output → final message. The messages will inform about the status of the process and the process may be aborted.
- By **Edit List** the txt-file containing the list of persons of the reduced ged-file will be edited by the text editor defined by the "base settings" of the OFB program resp. Gedcom Start Center. Alternatively the standard text editor will be used.
- By **Edit log** the log-file will be edited by the text editor defined by the "base settings" of the OFB program resp. Gedcom Start Center. Alternatively the standard text editor will be used.
- By **Start Browser** the browser will be opened to show the created html-file.
- Pushing **Close** exits the program and creates an ini-file containing the file names of the glsd files for later re-use. If data have been changed a confirmation dialog for data saving will pop up.
- Messages will be written to the status bar at the bottom of the screen.

### 3.1 Tab "Selection Definitions"

#### 3.1.1 Tab "Person- & Data groups"

The selection of persons will be done by up to 3 steps. However, it is also possible to transfer all people of the ged-file for transferring only a subset of the data field.

##### Step 1:

All persons of the ged-file are available for selection at this step.

All persons who meet the criteria of person, location and/or additional selection are being searched for.

By the button **Select persons** the "*Person Selection Screen*" described at 4 to reduce the number of persons will show up. The text color is

- black: no selection is defined
- green: a selection is defined without errors
- red: faulty selection – please correct

The status of the other selections is displayed in color below this button. The font color is

- gray: selection is not defined
- green: selection is defined
- red: the selection is incorrect - please correct
- orange: The data selection should be checked as none has been found. However, this is acceptable.

The group box **Logical relationship to ...** is active only if at least more than 1 method of selection is defined. Here the relations between the selections will be specified.

- **AND-Relation:** If both methods show the result TRUE, the person is selected.

- **OR-Relation:** If only one or both of the methods is TRUE, the person is selected.

Selected are all persons, which comply to the criteria of select persons, select places and add selection.

## Step 2:

All persons found at step 1 are available for selection at this step.

In the group box **For the persons found add their ...** following items can be chosen – only active if selection of persons is chosen:

- **Ancestors** will include all ancestors of the selected persons. if also the option "*Partner*" is selected, the partners of the selected persons will be included.
- **Descendants** will include all descendants of the selected persons. In is case the option "*Children*" should not be selected because they are all descendants.
- If *Ancestors* and/or *Descendants* are selected, the maximum number of **Generations** can be defined for each group separately. Allowed are the values 0..60, where "0" means unlimited. Ancestors and descendants will be calculated using the "Parents/Children" relations described below. The "secondary parents" will not be used.
- **Warning if more than ...** defines the number of persons selectable as proband without warning message for the following step of selections. If this number will be exceeded a confirmation dialog will show up. A value of "0" allows an unlimited number of persons.  
**Note.** A high number of probands can take a long time to find all their ancestors and descendants, because for every single person their pedigree will be analyzed.

Now the group of the *selected persons* – from selection of places, additions, persons, ancestors and descendants – is completed. In addition to these selected persons you may choose the following described groups.

## Step 3:

All persons found at step 1 + 2 are available for selection at this step.

In the group box **Beside these selected persons choose their ...** following items can be chosen

- **Partner** will include all partners of above persons. The related FAM records without the CHIL lines will be selected.
- **Children** will include all children of above persons. From the related FAM records only the CHIL lines will be selected.
- **Parents** will include all parents of above persons.  
 Now the group of the *found persons* – from selected persons, partner, children and/or parents – is completed.
- **Relations (ASSO / ALIA / ...)** and others having a relation to above persons according the definitions at tab "Gedcom Profile" > tab "Relations". If selected by the Gedcom profile, only ALIA in the format "1 ALIA @lxxx@" will be processed here (lxxx = person record nbr.).
- **Parents/Children ...** allows the inclusion of different parent-child relations. See explanations at User Guide GSP 1 for "*GSP – Gedcom Profile*" at tag "Parent-Child Relations". Here the biological parents and optional the **Uncertain** Parent-Child relations will be used.
- **Sec. parents/children:** These are "secondary" Parent-Child relations of the grouping **uncertain** (if not already selected above), **adoption**, **foster** or **others**.

The group box **Date processing during reading** allows a completion of incomplete date values to allow a selection and calculation.

- **Use "15" for date without day** takes instead of day 0 the 15. As middle of the month.
- **Use "01 JUL" for dates without day and month** takes instead of the plain year the 1<sup>st</sup> of July as middle of the year.
- **Use "5" for years, ending by ...** replaces those years digits containing at their end 1 substitution character (Example: 189x for a missing/unknown last digit) by "5" as middle of the decade. The substitution character may be any character.
- By **Edit Def** a file with all active definitions will be created and loaded by the text-editor defined at the



OFB resp. Gedcom Start Center at "Base settings". Alternatively the standard editor will be used.

- By **Del Def** the file with the active definitions will be deleted.
- By **X** at the bottom right all fields of the tab will be set to their default values.

### 3.1.2 Tab "Select places"

Fig 2: Tab "Select places"

Selection of places to limit the places, defined by the PLAC tag of the ged-file. The whole file will be searched according the following criteria and only the matching persons will be used for the further analysis.

- At **Data fields** the required place groups to be used for the comparison may be specified. By **on/off** all field will be switched on or off.  
The "*Residency*" for persons and families contains the PLAC tag values of the RESI tags.  
The "*Event/Fact place*" contains all PLAC attributes of those events resp. facts, not covered by the standard data elements for places.
- By **New** all fields will be initialized.
- At the group **Names of places** the names of places have to be entered at *Text for search*. Several names to be separated by ";" . The names may contain wild card characters "\*" and "?" and can be in lower case. Details are described in the User-Guide part 1, Attachment section "String comparison". Example: with the data "\*"b?rg;her\*" all places ending e.g. with "berg", "burg", "borg" and all places starting with "her" will be included or excluded. Blanks at the beginning or end of the text is not allowed.
- Per option switch it will be defined whether those places will be **included** or **excluded** .
- In case of an error the concerning text will be colored red:
  - Data field – if none is selected, but required.
  - Text for search – if none has been entered, but required
- At the group **further Options** are available
  - **PLAC text parts to use** defines the numbers of text parts from the PLAC tags, separated by comma.  
0 = No checking, the complete text will be used.
- By the button **Select persons** the program will switch to the tab "*Person- & Data groups*". The text color is
  - black: no selection is defined
  - green: a selection is defined without errors

- red: faulty selection – please correct.

### 3.1.3 Tab "Add Selection"

**Selection Definitions**   **Lists**

Person- & Data groups   Select Places   **Add Selection**   Special Selection   Options

**Definition of additional selection fields**

Nbr. Group	TAG_1	TAG_2	TAG_3	TYPE_2 zzz	
S1:	FAM	ENGA	DATE		X
S2:	INDI	BIRT	PLAC		X
S3:	INDI	NATI	TYPE		X
S4:	INDI	EVEN	PLAC	Flug von ROM	X

TYPE may be specified for each level-1 tag. It is required for EVEN, FACT + IDNO. Here, the value in TYPE\_2 can be specified as "zzz" or "TYPE" as TAG\_2 and the "zzz" as "Text for search" below.

**Comparison operations**

Field	Compare	Text for search - to be separated by ":",	
A0: S1	from:	1990.00.00 to: 9999.12.31 YYYY.MM.DD	X
A1: S2	=	"stadt:hohl"	X
A2: S3	=	Abstammung	X
A3: S4	<>	Wien	X

**Logical relationship**

Value 1	Compare	Value 2	
B0: A3	and	A1	X
B1: B0	or	A2	X
B2: B1	or	A0	X

New   Check

Select Persons activated   Select Places activated

Fig 3: Tab "Add Selection"

Beside the selection of persons and places, an additional selection is offered to selected those data not available by the other selections. 4 additional fields are available. The whole database will be analyzed according the criteria defined. Only those records complying to the criteria will be made available for the further analysis.

- Group field **Definition of additional selection fields** allows the definition of up to 4 selection fields S1..S4.

The definition must be done according the setup of the ged-file. The tags must be entered level by level up to that tag, whose attribute text should be used as data value.

- **Group** allows the selection of INDI or FAM records.
- At **TAG\_1** the required level-1 tag has to be entered (always in CAPITAL). If this tag already contains the desired text – at S3 e.g. "1 NATI CH", the adjacent cells stays empty.
- At **TAG\_2** the required level-2 Tag tag has to be entered (always in CAPITAL). If this tag already contains the desired text – at S4 e.g. "2 PLAC Wien", the TAG\_3 cells stays empty.
- At **TAG\_3** the required level-3 tag has to be entered (always in CAPITAL). This only is required in rare cases.

- **TYPE\_2 zzz** is always active. Each level 1 tag may have a "2 TYPE zzz". The EVEN, FACT and IDNO tags must have a TYPE. If missing, the corresponding fields are highlighted in pink. There are 2 options for selecting TYPE:

- The desired TYPE "zzz" text is entered in the TYPE\_2 field. In addition the TAG\_2 and, if needed, TAG\_3 has to be entered, where the data value has to be taken – in S4 with A3, e.g., all entries with "1 EVEN" and "2 TYPE Flug von ROM" and not equal to "2 PLAC Vienna" are selected. As long as the "TYPE\_2 zzz" field is empty, it is displayed in pink.
- The TYPE tag is entered as TAG\_2 and the desired TYPE text "zzz" as "Text for search" in the "Comparison operations" field. As placeholders can be used here, this is more flexible, but has the disadvantage that no level-2 and level-3 tags can be defined. – In S3 with A2, e.g., all entries with "1 NATI" and "2 TYPE Abstammung" are selected, regardless of their other level-2 tags.

In this case, the "TYPE\_2 zzz" field is disabled.

- Pushing "?" opens an info-screen with a short description.
- Pushing "X" clears the field of the related line.

**Note:**

Date fields may be defined only at S1 and S2!

As TAG\_2 and TAG\_3 **no** CONC and CONT allowed. These will be processed automatically by the program.

Explanations to above example:

- S1: From the FAM record all "1 ENGA" tags will be analyzed and the text "xxx" following "2 DATE xxx" will be used as engagement dates have a date entry of 01 JAN 1990 and later.
- S2: From the INDI record all "1 BIRT" tags will be analyzed and the text "xxx" following "2 PLAC xxx" will be used as data value (here all places ending with "stadt" or beginning with "berg"). (This is only an example, because birth place is already a standard data field at selection of places / persons).
- S3: From the INDI record, all "1 NATI xxx" tags with the "2 TYPE Abstammung" are searched for regardless of the "xxx" nationality entries.
- S4: From the INDI record all "1 EVEN" tags with the sub-tag "2 TYPE Flug von ROM" will be analyzed and the text "xxx" following "2 PLAC xxx" will be used as data value (here not equal to "Wien").
- The group fields **Comparison operations** and **Logical relationship** are identical to Person Selection Screen on page 20. **Note:** Only A0 and A1 can reference to date fields.
- Before leaving the tab a **Check** for logical correctness of the formulas must be done. Errors will be marked by a red "F". After correction a new check must be done. The button will stay in red as long as no error free check is performed.
- By **New** all fields will be cleared.
- By the button **Select persons** the program will switch to the tab "Person- & Data groups". The text color is
  - black: no selection is defined
  - green: a selection is defined without errors
  - red: faulty selection – please correct.

### 3.1.4 Tab "Special Selection"

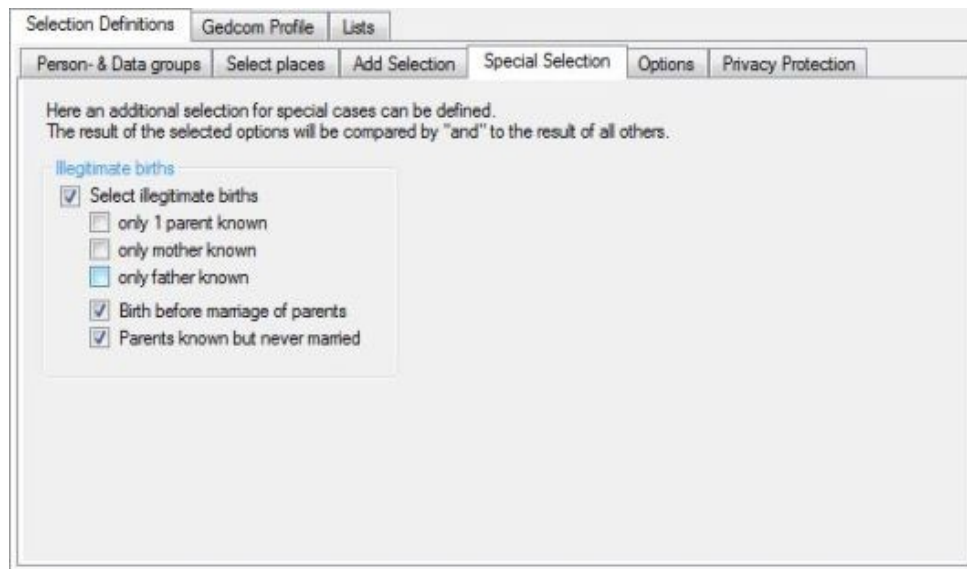


Fig 4: Tab "Special Selection"

This offers a selection for special cases, not yet provided by the above defined selections.

The result of the selected options will be compared to the result of all other already processed selections by an "AND" comparison. That means only if a person is selected by all previously performed selections and also is selected by this selection, the person finally will be selected. In case no previous selection is defined, only the result of this selection will be used.

- Group field **Illegitimate births** provides the options to select these persons.
  - **only 1 parent known** selects persons, whose father OR mother is known.
  - **only mother known** selects persons, whose mother is known.
  - **only father known** selects persons, whose father is known.
  - These 3 options are alternatively selectable only.
  - **Birth before marriage of parents** selects persons born before their parents got married. For calculation following rules apply, independent of any prefix text.
    - If both dates are complete → YYYY.MM.DD
    - If the day is missing at at least 1 date → YYYY.MM
    - If the day and the month are missing at at least 1 date → YYYY
    - Existing prefix text will NOT be used, only the date value will be taken.
  - **Parents known, but never married** selects persons, whose parents are both known, but never got married.

### 3.1.5 Tab "Options"

Fig 5: Tab "Options"

Defines options for reading the ged-file, their further processing and the output of the reduced ged-file.

- **Output:**

- **Create list of persons ...** creates a text file containing all persons of the reduced ged-file. The format is "Surname, Given name, ( fromYYYY – toYYYY)" and the sorting according the proband selection list.
  - The **Sorting** of the list may be done by the proband selection list setup or by Surname and Given name.
  - **Date aligned** searches for the longest name and aligns the dates accordingly.
  - **List selection steps** lists the steps 1..3 (see chapter 3.1.1 on page 7) after the dates.
- By **List DATE free form text lines** those date lines will be listed, whos text is completely bracketed and therefor so called "free form text" – Example:: "2 DATE (Eastern 1920)". The list will be copied to the log-file.

- **Output definitions:**

- By **Suppress data marked by RESN ...** data labeled by **... confidential** or **... locked** or **... privacy** will be suppressed for processing. Based on the level nbr. whole INDI or FAM records or several events/facts will be suppressed.
  - Several programs, e.g. Ages!, marks confidential classified notes by a prefixed tilde "~". By **NOTE ~xxx** such marked notes can be suppressed for output.

- **NOTE / SOUR:**

- if selected all NOTE resp.. SOUR tags of the person will be searched for select persons.
- if not selected, only the level-1 tags and the level-2 tags of birth, christening, death, burial and marriage will be searched.

For NOTE records the NOTE texts and the following CONC/CONT tags are processed, for SOUR records the TITL texts and the following CONC/CONT tags.



## 3.2 Tab "Lists"

Contains 3 tabs for the definition of the list output.

The output will be done in table format as html-file and optional as csv-file. The file name will be compiled by the file name of the ged file and the added file name of the glsd file. Both will be stored at the sub-folder "**/list**" of the folder where the ged file is stored.

### 3.2.1 Tab "Output data fields"

Col	Standard fields	Group	TAG_1	TAG_2	TAG_3	TYPE_2 zzz	Naming	Width in mm
X1:	▼	INDI ▼	EMIG	AGNC			Emigration	32
X2:	▼	FAMS ▼	ENG	DATE			Verlobung	18
X3:	▼	FAMS ▼	ENG	PLAC			Verlobungsort	25
X4:	Birth date ▼	▼						18
X5:	▼	FAMS ▼	MARR	DATE			Heir Datum Eltern	18
X6:	▼	FAMS ▼	MARR	DATE			Heir Datum selbst	18
X7:	▼	INDI ▼	EVEN	PLAC		Lebensort	Lebensort	25
X8:	Partner ▼	▼						22
X9:	▼	Mother ▼	BIRT	DATE			M: Geb-Tag	16
X10:	▼	Father ▼	OCCU				V: Beruf	25
X11:	▼	▼						0
X12:	▼	▼						0

Sum: 267

Fig 6: Tab "Output data fields"

Up to 12 data fields (X1 - X12 for output may be defined. The fields will be listed column by column in the defined sequence. For output the text of the fields will be taken 1:1 without any formatting. Exceptions are the date values, which can optionally be converted to the form "YYYY.MM.DD".

As TAG\_2 and TAG\_3 **no** CONC and CONT is allowed. For the defined fields **always** the text of existing CONT and CONC tags will be taken and joined to the main tag, CONC text will be concatenated without any additional character and CONT text will be linked by the sign "α".

In case of multiple level-1 tags, the text of these same tags will also be linked by this sign. For html-output the sign will be replaced by "<br>" (break), in the csv output, the sign can optionally be replaced by any other character. Optionally, the multiple tags can be suppressed.

For output in front of column 1 a running number, the name of the person and the record Id will be placed and don't have to be defined in addition.

- Group field **Definition of output data fields** is for the definition of the fields.
  - At **Standard fields** the standard fields - see fig 7 - may be selected. Only if not such a field is selected, the adjacent fields are active.  
For "Father", "Mother" and "Partner", the IDs are combined with the name.  
For "Death age" and "Marriage age" the age of the person will be calculated by the date of birth and the date of death resp. marriage and listed in years, months and days in the AGE form 35y 12m 16d. Months and days are calculated only if values are specified for them in DATE. Only DATE values without is stored without prefix text (ABT, FROM, ...) will be used.
  - At **Group** the record type can be selected from where the data should be

Standard fields

- Given name
- Surname
- Family name
- Education
- Occupation
- Place of origin
- Sex
- Note
- Source
- Religion
- Cause of death
- Birth place
- Death place
- Marriage place
- Birth source
- Death source
- Marriage source
- Birth date
- Death date
- Marriage date
- Father
- Mother
- Partner
- Death age
- Marriage age

Fig 7:  
"Standard fields"



assigned to the selected person:

- **INDI**: The data will be taken from the INDI record.
- **FAMS**: The data will be taken from the FAM record. These data are the **own** family data, e.g. the own marriage.
- **FAMC**: The data will be taken from the FAM record. These data are the family data of the **parents**, e.g. the marriage data of the parents.
- **Father/Mother/Partner**: The data will be taken from the INDI record.



Fig 8:  
"Groups"

- At **TAG\_1** the required level-1 tag has to be entered (always in CAPITAL). If this tag already contains the desired text – at X10 e.g. "1 OCCU Farmer", the adjacent cells stays empty.  
As TAG\_1 a single asterisk "\*" may be entered. This will analyze all level-1 tags.
- At **TAG\_2** the required level-2 Tag tag has to be entered (always in CAPITAL). If this tag already contains the desired text – at X3 e.g. "2 PLAC Wien", the TAG\_3 cells stays empty.  
TAG\_2 must never contain the TYPE tag.
- At **TAG\_3** the required level-3 tag has to be entered (always in CAPITAL). This only is required in rare cases.
- **TYPE\_2 zzz** is always active. Each level 1 tag may have a "2 TYPE zzz". The EVEN, FACT and IDNO tags must have a TYPE. If missing, the corresponding fields are highlighted in pink.  
The desired TYPE "zzz" text is entered in the TYPE\_2 field. In addition the TAG\_2 and, if needed, TAG\_3 has to be entered, where the data value has to be taken – in X7, e.g., all entries with "1 EVEN" and "2 TYPE Lebensort" the text eight of PLAC will be listed.
- Explanation to above example:
  - X1: From the INDI record all "1 EMIG" tags will be analyzed and the text "xxx" of "2 AGNC xxx" will be used as name of agency.
  - X2: From the FAM record all "1 ENGA" tags will be analyzed and the text "xxx" of "2 DATE xxx" will be used as date of the **own** (FAMS) engagement.
  - X3: From the FAM record all "1 ENGA" Tags will be analyzed and the text "xxx" of "2 PLAC xxx" will be used as place for the **own** (FAMS) engagement.
  - X4: From the selected standard field the related text will be used.
  - X5: From the FAM record all "1 MARR" Tags will be analyzed and the text "xxx" of "2 DATE xxx" will be used as place for the marriage of the **parents** (FAMC).
  - X6: From the FAM record all "1 MARR" Tags will be analyzed and the text "xxx" of "2 DATE xxx" will be used as place for the **own** (FAMS) marriage.
  - X7: From the INDI record all "1 EVEN" tags following by the defined "2 TYPE xxx" will be analyzed and the text "xxx" of "2 PLAC xxx" will be used as place of residence.
  - X8: From the selected standard field the ID and name are used together for the partner.
  - X9: From the INDI data record, the date of birth is used for the mother.
  - X10: From the NDI data record, the occupation is used for the vather.
- At **Naming** the name of the field should be entered and will be used as column title. Therefor short data requires short names.
- Pushing **"?"** opens an info screen with a short description.
- Pushing **"X"** right of the "?" deletes all cells.
- Pushing **"X"** right of the naming cell deletes all cells of the row.
- As **Width in mm** the minimum column width of every column has to be defined. If a value is set to "0", this field will be skipped. The **Sum** of all columns is listed below of the width fields. This includes the 3 columns of the next tab. The color changes from black to green at 80mm, to orange at 180 mm and to red at 270 mm. Additional gap of 1-2 mm (2-5 px) between the columns will be added.  
**Note:** The output will internally modified by the browser resp. printer to get all data to the columns. You have to get the optimum by testing.
- Group field **Move line** allows a line-by-line movement of the lines 1-10. Click into the cell of the standard field to be moved (This opens the list of the available standard fields, to be closed by an additional click.

By this the cursor remains at the selected field invisible.) and by  and  the selected line will be moved by 1 position.



### 3.2.2 Tab "Output definition"

Fig 9: Tab "Output definition"

Here the sorting of the persons and the output of the 3 standard columns will be defined.

- Group field **Sorting sequence**  
This has to be done first.
  - **No sorting** allows the output unsorted in the sequence of the ged-file.
  - For a sorting according **Data field** please note that no value may be used twice and at least the fields 1-3 have to be filled. Standard sorting sequence is 1<sup>st</sup> Surname, 2<sup>nd</sup> Date (birth date, for type 2 optional also marriage date), 3<sup>rd</sup> given name. This also will be activated by button **X**.
- To cover special requirements a **"special data"** field has been made available. For selection this usually should be priority 1. If this field has been selected subsequently the definition must follow. For this 2 alternatives are available:
- To define at **Sorting field**:
  - If **"Date"** is selected as data field, the type of **Date** must be selected. Available are birth/christening date, death/burial date and marriage/partnership date (if multiple, only the first one will be used). These date fields are prepared in the format YYYY.MM.DD.
  - If **"Special data"** is selected as data field, the type of **Special data** must be selected. Available are the 8 standard data fields.
- By **Sort missing date to** these may be sorted to the **beginning** or the **end** of the group.
- Group field **Delete special chars for sorting for ...**  
At the 3 text fields for **Surname**, **Given names** and **Special data** any special characters may be entered. Multiple characters to be entered adjacent without any space. Blanks are not allowed. Every entered character will be deleted from the original text for sorting.
- At group field **Output standard columns 1-3** the width of the columns may be defined in mm. See explanation at the previous tab. Only the columns for **Name** and **Id-Nbr.** **INDI** can be set to "0" to suppress them.
  - **In csv-files split "Name" into Given- and Surname** lists in csv-files given name and surname in 2 fields instead the original NAME text. This option is only active if csv-files are selected and the width of "Name" is > 0.

### 3.2.3 Tab "Output options"

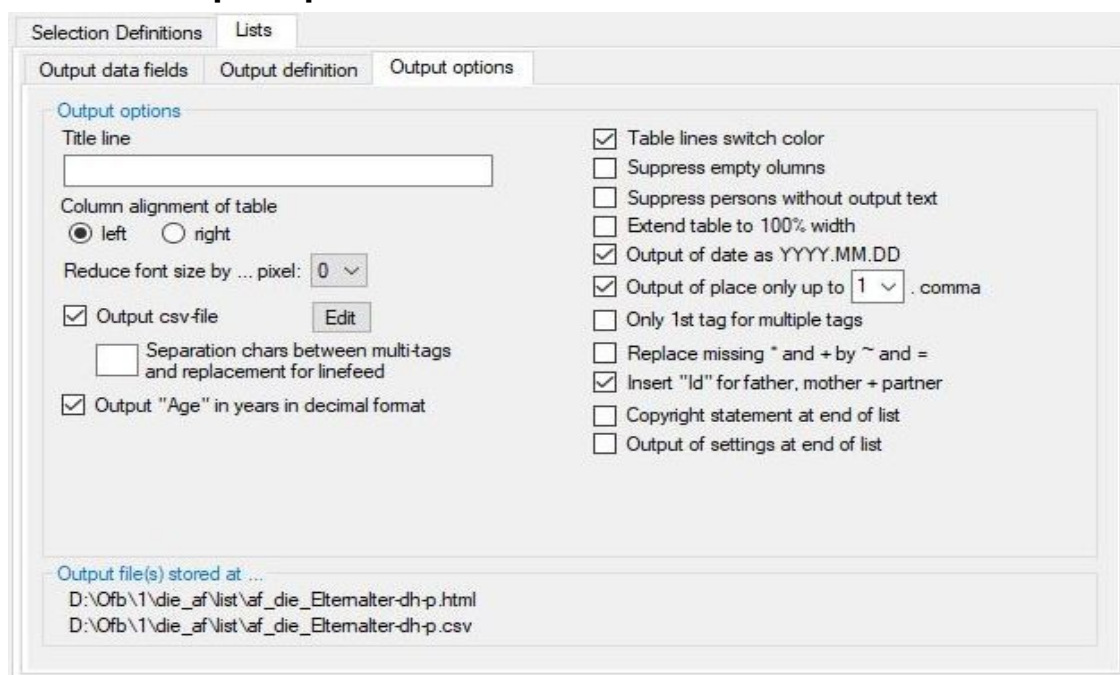


Fig 10: Tab "Output options"

Here further options for designing the output may be specified.

- Group field **Output options**

- Below of **Title line** the required title of the output may be entered.
- At **Column alignment** the alignment of the columns must be defined.
- At **Reduce font by ... pixel** the font size of the screen can be reduced by 1-3 px.  
**Note:** The printer output will always be 1 px smaller than on screen.
- **Output csv-file ...** induces beside the standard output an output of the data as csv-file at the sub-folder "/list" of the folder of the ged-file.

- **Separation chars between ...**

If the same tags are existing multiple within a record, their text will be concatenated. Between both the entered separation characters will be inserted.

These characters will also be used, if a text from a tag will be continued by a CONT tag.

Any characters may be defined. If nothing is defined, a space " " will be used as default.

- **Edit button** opens the csv file in the standard csv editor.

- **Output "Age" in years in decimal format** lists the values for the standard data fields "Marriage age" and "Death age" as a year in decimal format with 2 decimal places.
- **The standard output is "#y #m #d" for the number of years, months and days.**
- **Table lines switch color** allows for better reading a line-by-line output in the alternative colors "white" and "smoky white".
- **Suppress empty columns** sets internally the width of the affected column to "0", which will suppress the column.
- **Suppress persons without output text** suppresses those selected persons without any output text found in the html list. The csv file is not affected.
- **Extend table to 100%** inserts for HTML a control character, which will enlarge the output to 100% width of the browser screen resp. printer width.
- **Output of date as YYYY.MM.DD** lists date values in this format. Standard is 1:1 as in ged file.
- **Output of place only up to x. comma** lists places (PLAC text) only up to the defined comma, where "x" may be 1 or 2. Standard is 1:1 as in ged file.
- **Only 1st tag for multiple tags** suppresses the output of multiple level-1 tags except the first tag found.

- **Replace missing birth- and death data** by christening and burial data. This replaces missing data.
- **Insert "Id" for father, mother + partner** inserts for these persons, if they are selected as Standard field, their person-Id in front of their name.
- **Copyright statement at end of list** adds this to the listing. Standard is the output of "Author: xxx", where xxx is the name of the license owner.
- **Output of settings at end of list** lists all basic settings at the end of the html-list.
- Group field **Output file(s) stored at ...** shows the name and location of the html and csv file. The file name is composed of the file name of the ged or gdz file and the glsd file.

## 4 Person Selection Screen

**Person Selection**

**Comparison operations**

Data field	Compare	Text for search - to be separated by ";" - Wildcard chars allowed
A0:	=	"mann;afr"
A1: Birth date	from: to:	01.01.1950 2010.12.31 YYYY.MM.DD
A2: Birth place	=	adorf
A3: Sex	<>	m
A4:		

**Logical relationship**

Value 1	Compare	Value 2
B0: A4	and	A1
B1: A2	or	B0
B2: A3	and	B1
B3:		

**Note**  
By comparison operations individual data fields will be checked independently from each other. If several data fields are selected, all of them must be further evaluated and summarized to 1 resulting value. In this case all listed values above the particular value can be used. At B0 useable are A0 - A4, at B3 useable are A0 - A4 and B0 - B2. The last value defines the result

Buttons: New, Selection of places defined, Check, Close

Error in Formulas - Please correct !!- Without correction NO selection

Fig 11: Person Selection Screen

**Data field**

- Given name
- Surname
- Family name
- Education
- Occupation
- Place of citizenship
- Sex
- Note
- Source
- Religion
- Cause of death
- Birth place
- Death place
- Marriage place
- Birth source
- Death source
- Marriage source
- Birth date
- Death date
- Marriage date

Fig 12: Data fields

Selects the desired group of persons from the database. For this purpose data fields can be compared search criteria and their result logical combined leads to one final result. The last used line of the window will be used as final result of the evaluation. An intensive error checking will be done.

In case no selection is required, pushing **New** will delete all entries.

By **Comparison operations** up to 5 comparison (A0 .. A4) of data fields can be done.

- Select **Data field**: Figure 12 specifies the data fields available by a Combobox. The date fields can only be used in the first 3 lines (A0, A1 and A2).

Results of Comparisons:		
Comp	SrchTxt	Result
"="	","	all empty fields
	"*,"	everything
	"?*,,"	all none empty fields
	"W*.,,"	all starting with w + empty fields
"<>"	"?*,,"	all empty fields
	"*,"	no field
	","	all none empty fields
from/to	0000.00.00	no date value

Table 1: Comparisons

- Select the type of **Comparison**: "=" and "<>" available for all other elements. The results of some special comparisons are also shown in the table (without "").
- Enter **Text for search** through the data field. Several items to be separated by ";". They may contain wild card characters "\*", "#" and "?" and can be in lower case. Details are described in the **User-Guide part 1, Attachment** section "String comparison".

**Note:** If **Note** or **Source** is selected as data field and these data are stored as NOTE record or SOUR record, the record number must not be entered as search text, but for:

- **Note:** Any text of the NOTE data record.
- **Source:** Any text of the TITL tag of the SOUR data record.
- **From-date** and **To-date** for the date fields must be entered strictly in the form "YYYY.MM.DD" !! "MM" and "DD" may contain any value.
- By option switch **Chri/Buri** the christening and burial data also will be compared by "or" to the birth and death data.

Marriage data will be used for both partners.

Selection of status **"died"**: To consider these cases during "Person selection", they can be found using the data field "Death place", the comparison "=" and the search text "Y". Internally the program will use the "Y" (for died) in case of available data in DATE, PLAC or SOUR or the Gedcom file contains for death the data

"1 DEAT Y, if date and place are unknown.

By **Logical Relationship** the comparisons done at A0 - A4 will be logically compared. Doing this, you need 1 line less than for the comparison operation. Therefor B0 – B3 are available.

- **Value 1** and **Value 2** allows by a Combobox the possible codes A0 – A4 and B0 – B2.
- Select the type of **Comparison**: "and" and "or" are available.

The lines will be analyzed from top to bottom.. Therefor the last filled line contains the result. In above example, if free of errors, at A0 all Surnames ending with "mann" or starting with "alfr" , at A1 all birth and christening dates in the selected range, at A2 all birth places exactly named "adorf" and at A3 all persons not equal male sex will be selected. These results will be combined at B0 – B2. B2 then contains the final result (after all fails have been corrected in above example

- Pushing **X** will blank the fields in the line.
- Pushing **New** will blank all fields of the screen.
- Pushing **Check** will verify all entered data on their correctness. In case of a potential error, the line will be marked with a red "F". See A1 (wrong form of "from-date") and B0 (wrong value A4 – not filled) at above example.

Pushing **Close** will take all data and return to the main screen.