

## – OFB –

# Service Programs

### *User Guide*

#### *Part 1*

- **OFB – Start Center** V: 8.2.2
- **OFB – Color/Font Management** V: 8.2.2
- OFB – Gedcom Profile Management – in Part 2

Diedrich Hesmer  
Haldenstr 24  
71083 Herrenberg  
[ofb.hesmer@gmx.de](mailto:ofb.hesmer@gmx.de)

All changes to the previous version are colored

## Table of Contents

1	Introduction.....	3
1.1	Copyrights and License Conditions.....	3
1.2	Support, Download & Installation.....	3
1.3	Start of Program.....	3
1.3.1	Program start by command line.....	3
1.4	Gedcom file (ged-file).....	3
1.5	GEDZIP file (gdz file).....	3
1.5.1	Processing of gdz files.....	4
2	OFB Start Center.....	5
2.1	Description.....	5
2.2	Main screen.....	5
2.3	OFB Update Check.....	6
2.4	USB Transfer.....	7
2.5	Internet Update.....	7
2.6	Additional Buttons.....	8
2.6.1	Setup of Text file "_start-prog.txt".....	8
3	OFB Color/Font Management.....	10
3.1	Description.....	10
3.2	Color/Font file (ocf-file).....	10
3.3	Main screen.....	10

# 1 Introduction

To simplify and support the usage of "**Our Family Book**" – called **OFB** – corresponding "OFB Service Programs" were developed. Those are:

- OFB Start Center  
allows start of all OFB programs from a central point, as well as the activation of the license, copying the OFB programs and system files to an USB stick and the selection of the language.
- OFB Color/Font Management  
this program allows the definition of colors and fonts of the lay-out for the screen OFB lists. The printer output will be optional in colors or in black and white.
- OFB Gedcom Profile Management – described in part 2  
this program is used to create and manage the different Gedcom profiles and the related profile files (ogp-files) of the OFB. These Profile files are storing the rules for the transition of the genealogical data of the ged-files to the OFB. During importing of the ged-file by the OFB the data will be interpreted and transferred accordingly. Without such profile files the OFB can't process the genealogy data.

## 1.1 Copyrights and License Conditions

The OFB program and all related files and documentation is shareware, including these OFB Service Programs. Therefor the same copyright and license conditions are valid as defined in the OFB User Guide.

A separate license for the Service Programs is not required, they haven't to be activated.

## 1.2 Support, Download & Installation

These information are available at the OFB Homepage at <http://ofb.hesmer.name> and in the OFB User Guide.

## 1.3 Start of Program

By click of the corresponding button of the OFB Start Center or click on the shortcut icon at the place where they have been installed. Alternatively the Color/Font Management and the Gedcom Profile Management may be started by a double click on a ocf-file resp. ogp-file.

### 1.3.1 Program start by command line

The program is designed that it can be started with command line parameters. Therefor it can also be processed by others programs or PowerShell batch files (see also my program *BatchRun* on the homepage under "GSP/OFB Utility").

The following call is required: "*control file with full path*"[,/q]. Control files are those files that contain the contents of the screens, i.e. ofd, ogp, ocf, ...

- The file specification must be enclosed in "".
- The ",/q" command is optional and causes processing in the background so that a screen is only opened if errors or questions occur. Otherwise, the program ends automatically. Without this command, the program starts normally with the specified control file.
- Example command line: "*C:\0\group-gov-test2.ocf*",/q.

## 1.4 Gedcom file (ged-file)

All genealogical data are stored in a ged-file (Gedcom file). These must be made available by adequate Genealogy programs (e.g. PAF, Gen+, FTM) by their export function.

## 1.5 GEDZIP file (gdz file)

The GEDZIP file format (gdz files) was introduced by GEDCOM 7.0. The gdz file is a zip archive and contains:

- An entry with one ged file named "gedcom.ged".

- An entry for each local media file referenced in gedcom.ged. Since the ged file and its local media files are located in the same zip archive, the corresponding FILE specifications are to be entered in the gedcom.ged without path specification.

Now the ged file and all local media files contained in it can be passed on to others together in one file.

### **1.5.1 Processing of gdz files**

If a gdz file is loaded instead of a ged file, the following will occur immediately thereafter

- Creation of a folder "gdztmp" in the folder of the gdz file.
- Unpacking the gdz file into this folder.
- A check for the existence of only one ged file in this folder.
- The adjustment of internal variables (Example: all media referenced as local are located in this folder).

After starting the GSP program the processing of the ged file is done as before.

## 2 OFB Start Center

### 2.1 Description

The OFB Start Center (OFB-Start.exe) allows the start of all OFB programs from a central point. Also from here the licenses can be activated, an OFB USB stick generated and the languages defined.

### 2.2 Main screen

After start of the program the following screen shows up. at the top are the 3 OFB programs and below the 9 Gedcom Service Programs if those have been installed during setup.



Fig 1: Main screen OFB Start Center

The individual program starts after pushing the corresponding button. It's allowed to run multiple programs in parallel. Only the buttons of the programs installed are visible.

- **Info**  
at the top right corner is a button. By pushing this an information screen opens showing the actual path for the program folder (where the OFB programs and basic files are stored), the data folder (where the ini files, license file and user guides are stored) and the stored licenses.
- **Update**  
By this the availability of new program versions and modified User Guides at the homepage can be checked and the new versions downloaded to the local PC.
- **USB Transfer**  
Opens the USB Transfer screen for creation of an OFB USB Stick or any other storage media.
- **Help**  
Opens the User Guide – part 1
- **Home**  
Opens the OFB homepage by the browser.
- **Language**  
By this another language can be selected via a selection screen. The selected language will be used for

the screen and the output. Only language files with the name "ofb-xx.lng" ("xx" are the nations characters, e.g. "en" for English) are offered. The selected language file will be loaded, the nations flag used as background for the button and the name listed below the language button.

A mouse click on the displayed language (here "ofb-en.lng") opens the text editor with the file "**\_start-prog.txt**" described in chapter 2.6 Additional Buttons on page 8.

- **License**

By this the license information provided by license file attached to an email can be activated on the local PC. After pushing the button, the standard file load screen shows up and expects a file type of "ofb-\*.lic" (The license file attached to the email is named "ofb-YourName.lic", whereas "YourName" usually is compiled from the name of the license owner. This file should be stored in a save folder.). After selection of the file their content will be transferred to the file "ofb.lic" to be available for the OFB program and, if the license is valid for these programs, the Gedcom Service programs. Now the activation of the license is completed.

- **Close**

closes the program.

## 2.3 OFB Update Check

During every start of the program, before the Main Screen shows up, the program checks, if an update check is overdue. In this case the following screen shows up.

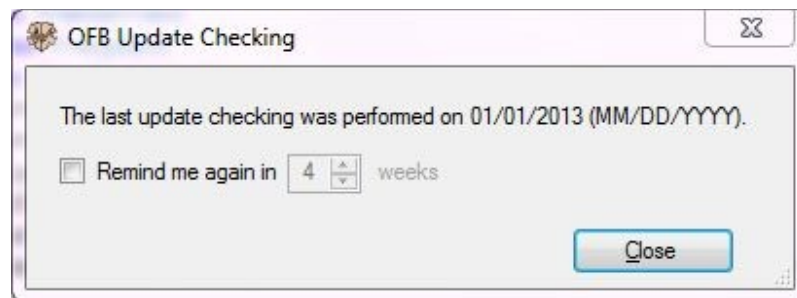


Abb 2: Screen for Update Check

The date of the last checking will be listed.

- By **Remind me again in** the number of weeks for the next checking can be defined.
- By **Close** the program returns to the Gedcom-Start screen.

**Note:** For the further process 3 cases are possible:

- If you would like to run an immediate update (by the "Update" button in the Main screen), the screen can be closed without any action.
- If you would like to run an update only after some time, activate the "Remind me ..." and select the number of weeks (1..99 allowed).
- If you would like to be reminded at the next start of the program, the screen can be closed without any action.

## 2.4 USB Transfer



Fig 3: Screen for USB Stick creation

The screen supports the creation of an USB stick (or any other folder structure). The folder "OFB" will be created and all required programs and files copied to this folder. The USB stick now may be carried to any PC meeting the system requirements and the OFB can be started.

- By a drive or path on the USB stick or any other storage media will be selected (at fig. "D:\Ofb Projekt"). At this place a folder "OFB" will be created. All programs and files will be copied to this folder.
- Selection of **incl. License file** also copies the file "ofb.lic" to the folder.  
**Note:** A transfer to third parties is NOT allowed according to the license conditions.
- By **Start** the copy process starts. The affected folders will be listed and the status shown at the progress bar.
- By **Close** the program returns to the OFB-Start screen.

Messages will be listed at the bottom bar of the screen.

## 2.5 Internet Update

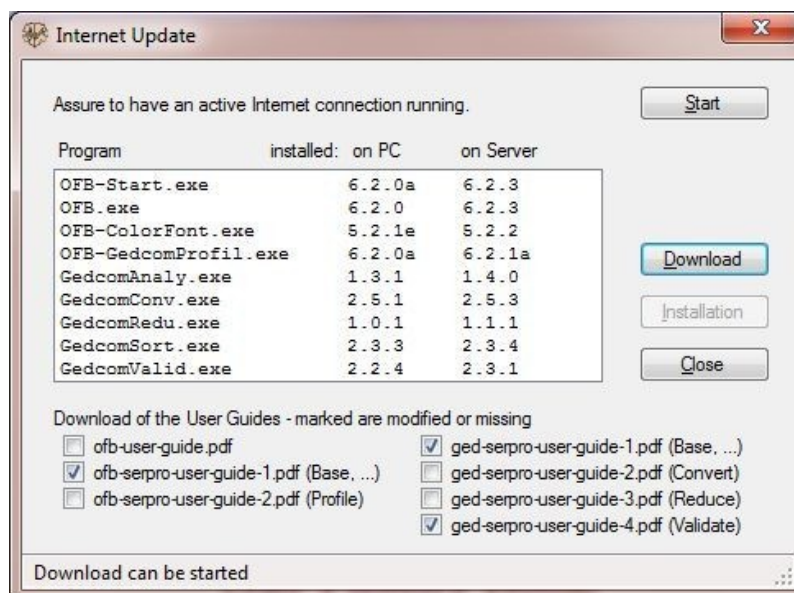


Fig4: Screen for Internet Update

This allows an automated Internet update. Before starting you have to assure an active Internet connection. After opening the screen is more or less empty.

- By **Start** the check for new updates at the server of the homepage will start. First it will be checked, if an Internet connection is existing. Assure that you are connected to the Internet. In case of a firewall you have to grant access rights for the program, if necessary. The process may need several seconds. In case of a red message at the lower area of the screen no Internet connection was available or the server is down for maintenance or the file containing the version information could not be found. Please wait a short time and try again. After successful check the results will be shown at the screen, as shown at the above figure. The modified User Guides will be checked automatically.
- In case new versions have been found or User Guides are selected, by **Download** the download of the user guides and/or the installation file "ofb-setup.exe" can be started.
- In case a new installation file has been downloaded, by **Installation** the installation of the program starts. The update screen and the start center will be closed automatically. However if a message pops up, that the process couldn't start because the file is used by another program, most likely the virus scanner or firewall has blocked the file "ofb-setup.exe". The message screen allows a retry of the installation, but you have to release the file first or skip the update by the cancel button. You might download the file manually from the HP and start the installation by a double click.

## 2.6 Additional Buttons

Whenever programs of the groups "GSP Special" or "OFB/GSP Utility" are existing in the OFB program folder, the associated buttons will be shown in the lower area of the Start Center.



Fig 5: Scheme additional buttons

Further buttons for calling programs, pdf-, html- and other files, may be initiated by a manually created text file using a text editor. Create a text file "**\_start-prog.txt**", UTF-8 coded if possible, and save it into the folder of the ini-files. This is the **Data folder** shown in the pop-up when pushing the **Info** button. The maximum allowed additional buttons is 18.

### 2.6.1 Setup of Text file "\_start-prog.txt"

This file controls the position, the function and the appearance of the additional buttons. Comment lines, starting with //, may be included.

For each button 1 data line is required with the content

**"Position;Text;FileCall;TextColor;Font;BackgroundColor"**

3-5 semicolons are required.

- **Position**  
of the button, 1..18, see below
- **Text**  
of the button, max 10-12 chars.
- **FileCall**  
with complete path specification for exe, pdf, html, or other files. For files different than ".exe" the associated standard program will be started. The file call may be enclosed by "". The path specification can be omitted if the program is in the OFB program folder, see "GedShow" in the sample file. Internet calls will not function.

**Internet file calls** starting with "http" are accepted.

**Example:** "<https://gedcom.io/specifications/FamilySearchGEDCOMv7.pdf>"

An **extended file call**, only for exe program files, allows the additional call of a data file, which is opened directly in the program. For this purpose, a comma is required after the ".exe" and the data file



specification with full path. In this case the whole FileCall should be enclosed by "".

**Example:** "GedShow.exe,C:\Ofb\1\paf\rieh\gedcom krasna\_u\_mpl.ged" starts GedShow with the specified data file.

- **TextColor**

will be defined by code values. If no code is defined (data line ends with 3<sup>rd</sup> semicolon), the default value *mediumblue* will be used. This also will be used for invalid codes. Valid codes are

*b=brown, g=green, m=magenta, o=olive, r=red, k=black*

- **Font**

will be defined by code values. If no code is defined (data line ends with 4<sup>th</sup> semicolon), the *normal* font will be used. This also will be used for invalid codes. Valid codes are

*B=bold, I=italic, X=both*

- **BackgroundColor**

will be defined by code values. If no code is defined (data line ends with 5<sup>th</sup> semicolon), the default value *Control* will be used. This also will be used for invalid codes. Valid codes are

*b=skyblue, c=cyan, g=gold, l=lime, o=orange, p=pink, s=silver, y=yellow*

A button only will be created, if the FileCall exists. Depending of the number of buttons the height of the screen will be adjusted. The position numbers of the buttons are

```

17              18
11 13 15 16 14 12
 5  7  9 10  8  6
 1  3          4  2

```

Buttons which are not assigned by the text file will be used by the "Special" and "Utility" programs found in the OFB program folder resp. remain unused. This padding can be suppressed by a line with "X" at the first position (as comment in the example).

The **Sample file** for above schematic figure (all 18 positions used) looks like:

// Button definition - Start Center

```

1;BroKeep;C:\Program Files\Brother's Keeper 7\Bk7w.exe;o
2;GedRef;"C:\Ofb Projekt\Gedcom\Specs\gedcom-schnellreferenz.pdf";r
3;Legacy;"C:\Program Files\Legacy8\Legacy.exe";o
4;551;"C:\Ofb Projekt\Gedcom\Specs\gedcom-551-deutsch.pdf";r
5;FTM;"C:\Program Files\Family Tree Maker 2014.1\FTM.exe";o
6;GedShow;GedShow.exe;g
7;PAF;"C:\Program Files\FamilySearch\PAF5\pstart.exe";o
8;SourPers;SourPerson.exe;g
9;Ages!;"C:\Program Files\Ages\Ages.exe";o
10;DeleteFiFo;DeleteFiFo.exe;b
11;Chars2Utf8;Chars2Utf8.exe;
12;TagSrch;GedTagSearch.exe;g
13;Gedcom 7;"https://gedcom.io/specifications/FamilySearchGEDCOMv7.pdf";r;X
14;BatchRun;BatchRun.exe;g
15;FindFile;FindFiles.exe;b
16;ModFile;ModFile.exe;b
17;SexHusbWife;CorSexHusbWife.exe;
18;PersonSrch;PersonSearch.exe;g
// X at 1st position = no padding

```

A mouse click on the displayed language **ofb-en.lng**, displayed in the middle of the bottom, opens the text editor with the file "**\_start-prog.txt**".

## 3 OFB Color/Font Management

### 3.1 Description

The program (OFB-ColorFont.exe) is used to create and manage the definitions for colors and fonts and the related files (ocf-files) for the design of the screen output of the OFB lists. The printer output will always be in the standard system colors.

### 3.2 Color/Font file (ocf-file)

These files will store the selected color and font definitions. By this the OFB is creating the necessary control commands for the css files and is providing the requested colored genealogy symbols.

### 3.3 Main screen

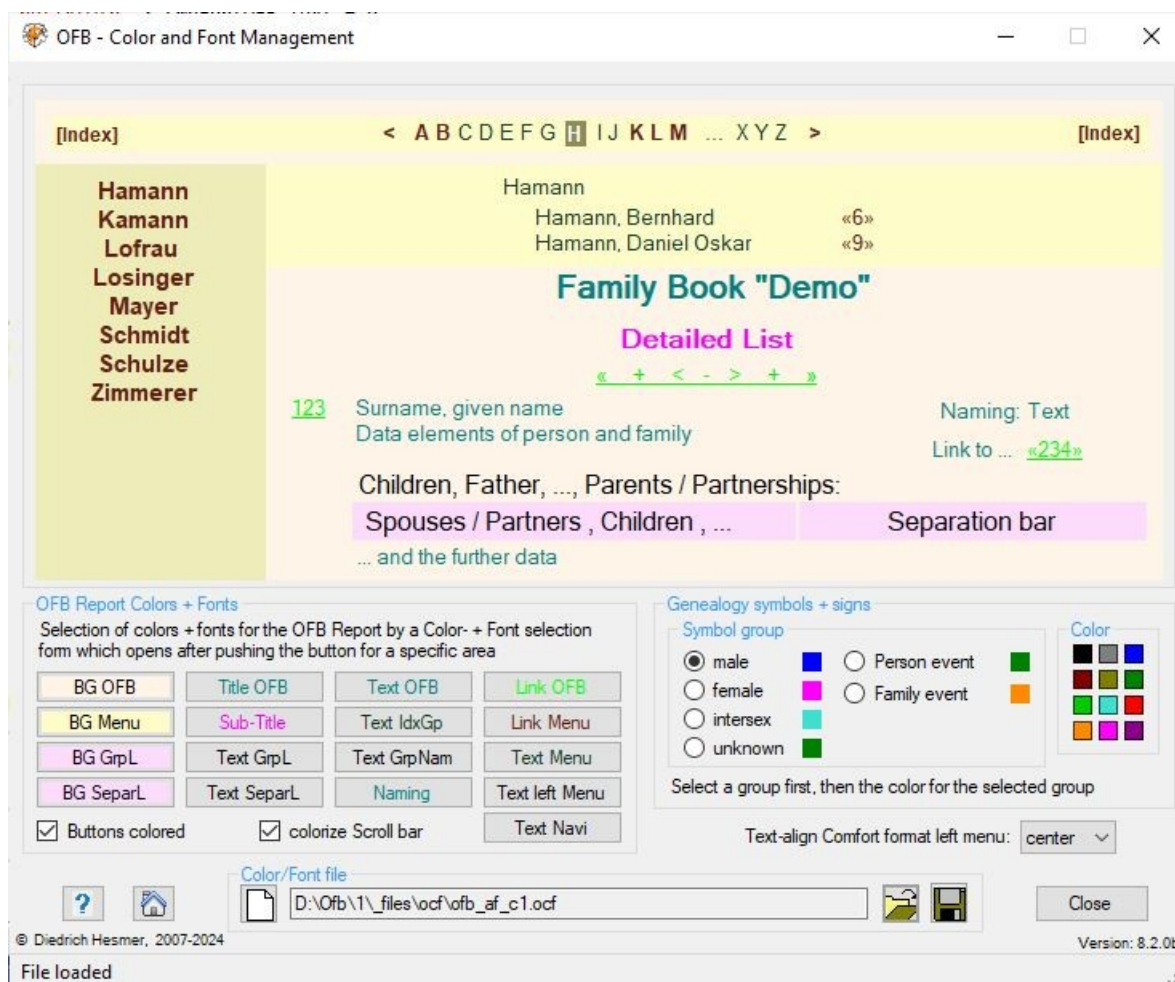


Fig 6: Main screen Color/Font Definition

After start of the program the following screen shows up. The name of the last loaded file, if available, will be reloaded, if found in an ini-file, will be reloaded. The upper part of the screen will show an image of the screen output with the colors according to the definitions.

The group **OFB Report Colors + Fonts** contains 17 buttons to define the color of each area – see next table (for the buttons "BG Sepal", "Text Sepal", "BG GrpL", "Text GrpL" and "Text GrpNam" the affected areas of the report are colored marked in the "OFB User Guide" in section "Description of ..."). After pushing a button, a color dialog screen will pop up. At the two upper right areas the color will be defined by moving the cross hair and the solid triangle to the proper position or by entering the red, green and blue color portions to the 3 fields at the lower right side. Pushing "OK" will return to the main window and the coded values of the selected color will be shown at the status bar, or for the (F) marked areas the standard font dialog screen

Button	Areas of the report
BG OFB	Background color general (2 additional background colors will be calculated)
BG Menu	Background color of the menus
BG GrpL	Background color of group boxes for group names OFB type 3 + special field type 9
BG SepaL	Background color of the separation lines for names + generations
Title OFB (F)	Text color + font of the Title of the OFB reports + index lists
Sub-Title (F)	Text color + font of the Sub-Title of the OFB reports + index lists
Text GrpL (F)	Text color + font of the group boxes (e.g. parents)
Text SepaL (F)	Text color + font of the separation lines
Text OFB (F)	Text color + font of the OFB reports + index lists
TextIdxGp (F)	Text color + font of the group names in index lists of detail design
Text GrpNam (F)	Text color + font of the Group names (Children, Father, ...)
Naming (F)	Text color + font of the naming text
Link OFB	Link color of the OFB reports + index lists
Link Menu	Link color of the menus
Text Menu	Text color of the general text of the menus (e.g.. names)
Text left Menu	Font of the left menu for names
Text Navi	Font of the upper navigation line

Table 1: Areas of coloring + font definition



Fig 7: Color Dialog screen




opens to define name, size and effect of the font. Pushing "OK" will return to the main window and the coded values of the selected color and the font values will be shown at the status bar and the effect shown at the upper part of the screen.

By the option **Buttons colored** the 16 buttons will be colored according the color of the associated area.

By choosing the option **color Scroll bar** the scroll bars at the right side will be colored by the background color. This only will be effective for the MS Internet Explorer.

The group **Genealogy symbols + signs** allows the selection of colors for the genealogy symbols. One of the 6 groups has to be selected first, then one of the 12 colors by clicking on the pattern. The

selected color will be shown right of the group name. Person event means birth, christening, death and burial, Family event means marriage, divorce and the analogous None-marital relationships.

- By **Text align Comfort format left menu** the left menu of the comfort type index lists can be "center", "left" or "right" aligned.
- Pushing  the filename will be deleted, by this the standard system colors will be used.
- Pushing  a color/font file will be loaded.
- Pushing  a folder (e.g. "C:\Data\OFB\files\") and name for the color/font file will be defined and the file stored as "ocf-file". This file contains all settings specified by the screen for reuse and for using by the OFB.
- Pushing **Help** opens the OFB utility user guide.
- Pushing **Close** will close the program. The storage location name of the current color/font file will be written to an ini-file for reload. If data have been changed a confirmation dialog for data saving will pop up.
- Messages will be written to the status bar at the bottom of the window, including the chosen color in the formats hexadecimal (hex), integer (int), red-green-blue-part (rgb).